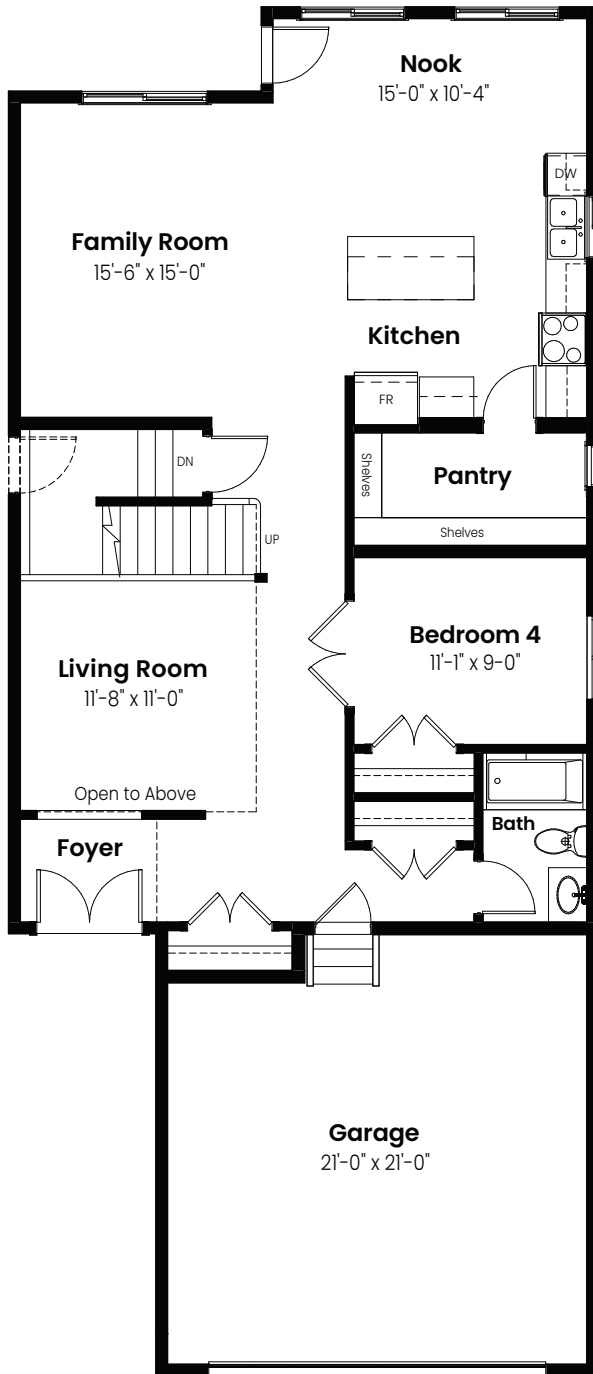


4 Bedrooms | 3 Bathrooms

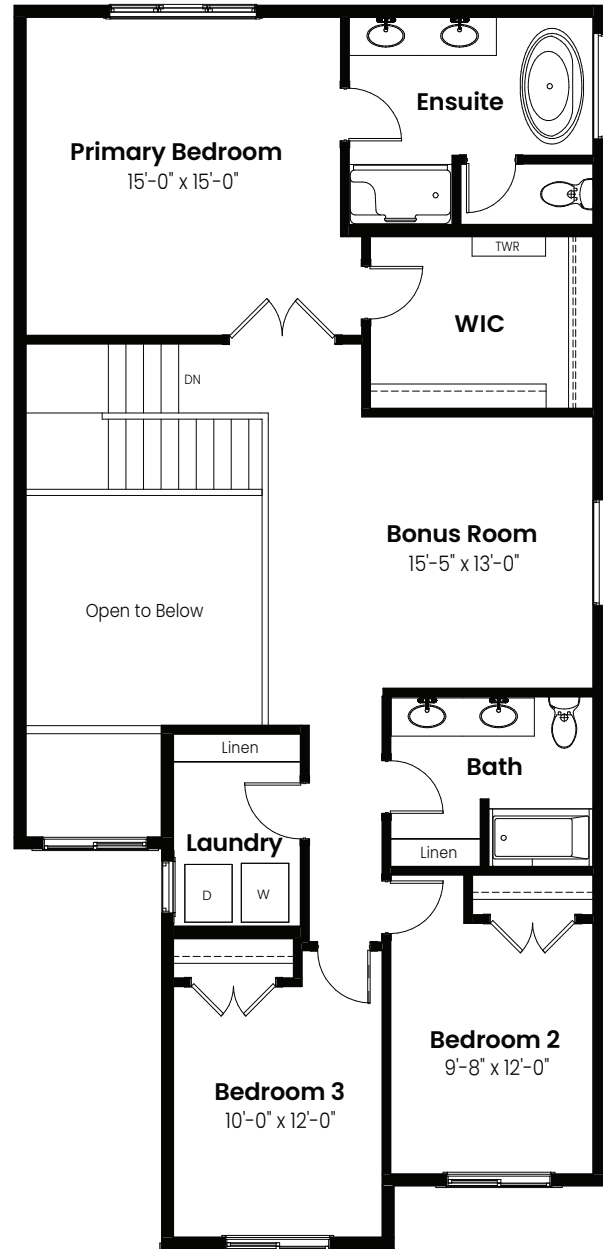
# Everest

# 2,531 sqft

28' Wide



Main Floor: 1200 Sq Ft



Second Floor: 1331 Sq Ft

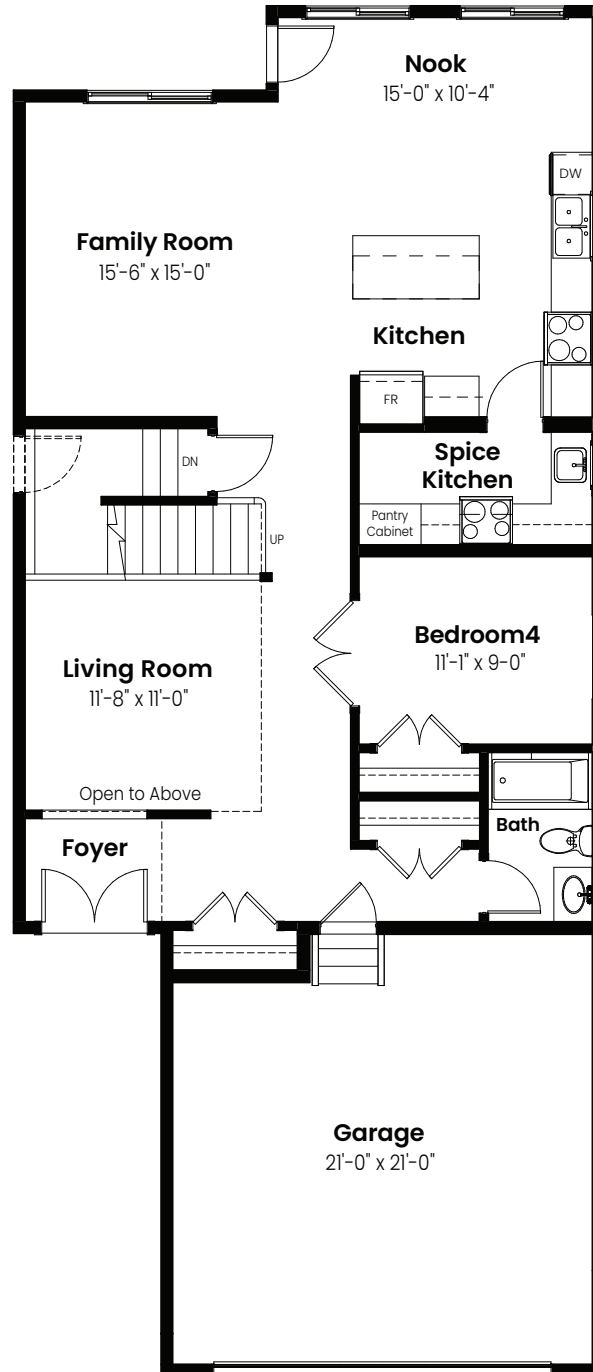


© 2025 Landmark Group of Companies Inc. All rights reserved. Any use or reproduction in whole or in part of these promotional materials without the prior written authorization of Landmark Group of Companies Inc. is strictly prohibited. Floor plans, specifications, pricing and dimensions shown are approximate and subject to change without notice. Artist rendering shown. Interior room dimensions are taken from inside of walls. Garage dimensions are taken from outside of walls. Revised on 01/17/2025.

4 Beds | 3 Baths | 2,531 Sq. Ft. | 28' Wide

# Everest

# Options



Spice Kitchen Option: 1200 Sq Ft

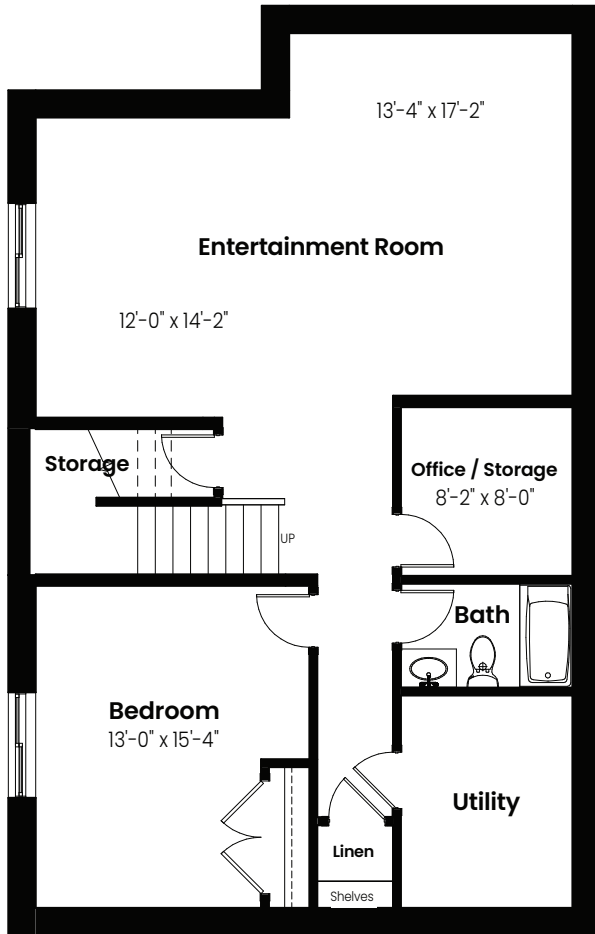


© 2025 Landmark Group of Companies Inc. All rights reserved. Any use or reproduction in whole or in part of these promotional materials without the prior written authorization of Landmark Group of Companies Inc. is strictly prohibited. Floor plans, specifications, pricing and dimensions shown are approximate and subject to change without notice. Artist rendering shown. Interior room dimensions are taken from inside of walls. Garage dimensions are taken from outside of walls. Revised on 01/17/2025.

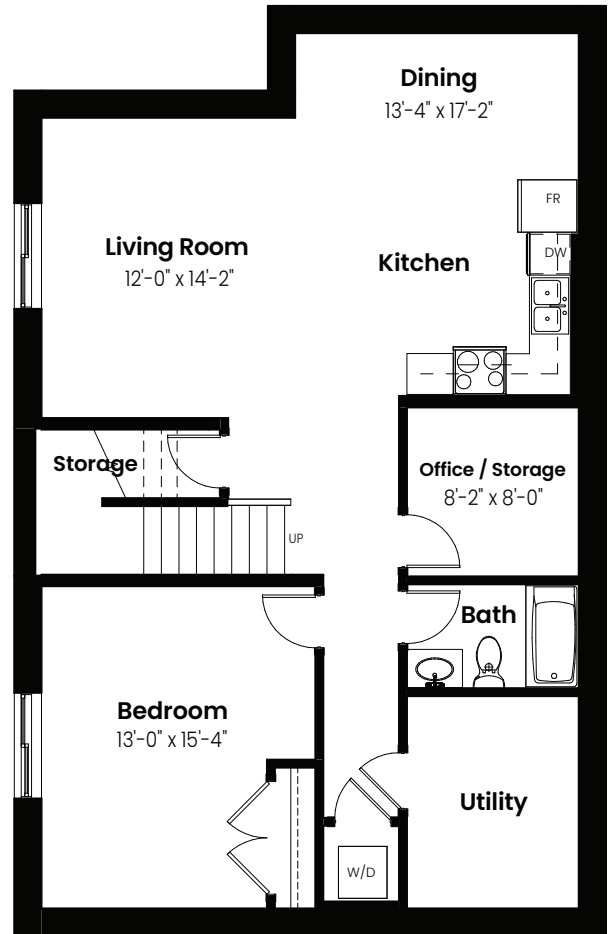
4 Beds | 3 Baths | 2,531 Sq. Ft. | 28' Wide

# Everest

# Basement Options



Basement Development  
Option: 921 Sq Ft



Basement Suite Option: 921 Sq Ft



4 Beds | 3 Baths | 2,531 Sq. Ft. | 28' Wide

# Everest

# Elevation



© 2025 Landmark Group of Companies Inc. All rights reserved. Any use or reproduction in whole or in part of these promotional materials without the prior written authorization of Landmark Group of Companies Inc. is strictly prohibited. Floor plans, specifications, pricing and dimensions shown are approximate and subject to change without notice. Artist rendering shown. Interior room dimensions are taken from inside of walls. Garage dimensions are taken from outside of walls. Revised on 01/17/2025.