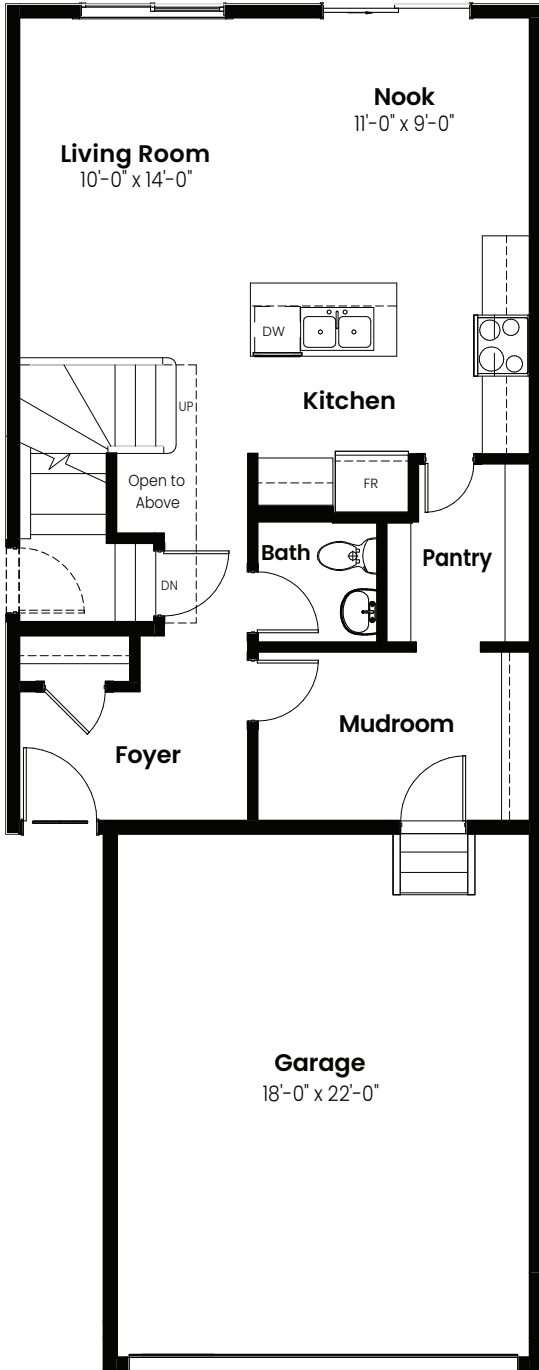


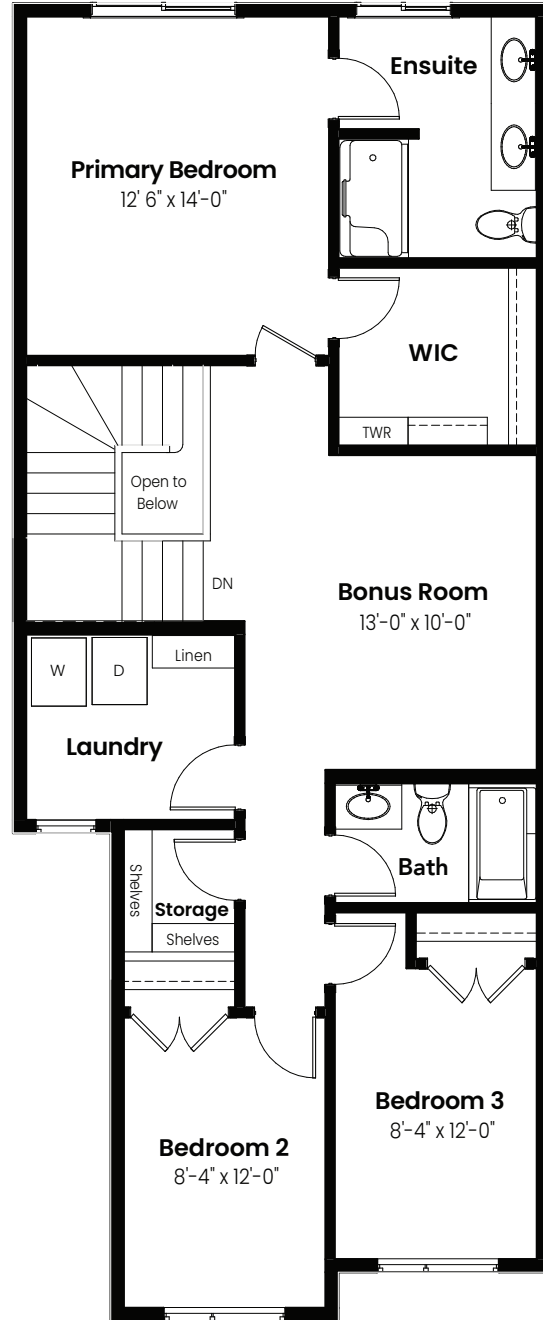
3 Bedrooms | 2.5 Bathrooms

Lotus

1,824 sqft
22' Wide



Main Floor: 748 Sq Ft



Second Floor: 1076 Sq Ft

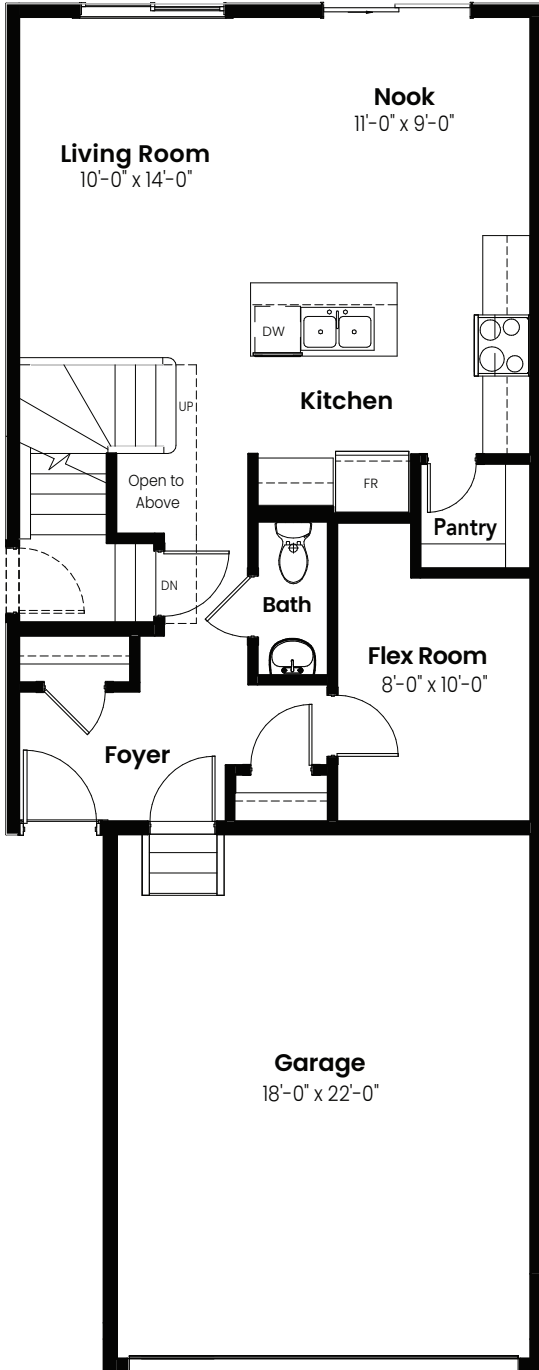


© 2025 Landmark Group of Companies Inc. All rights reserved. Any use or reproduction in whole or in part of these promotional materials without the prior written authorization of Landmark Group of Companies Inc. is strictly prohibited. Floor plans, specifications, pricing and dimensions shown are approximate and subject to change without notice. Artist rendering shown. Interior room dimensions are taken from inside of walls. Garage dimensions are taken from outside of walls. Revised on 01/17/2025.

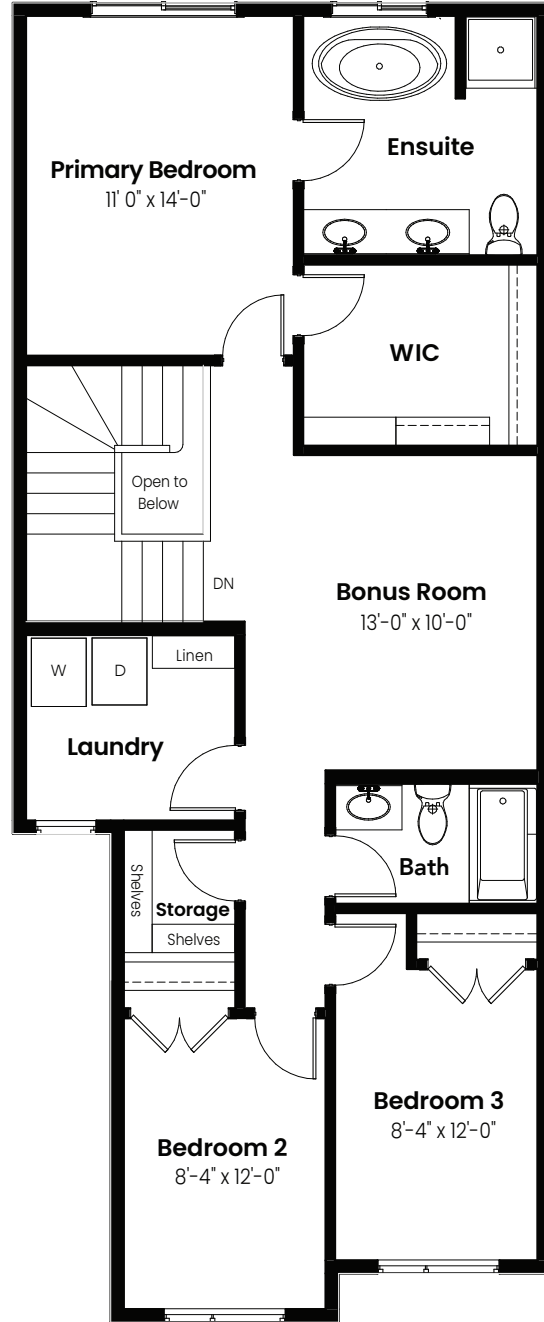
3 Beds | 2.5 Baths | 1,824 Sq. Ft. | 22' Wide

Options

Lotus



Flex Room Option: 748 Sq Ft



4 Piece Ensuite Option: 1076 Sq Ft

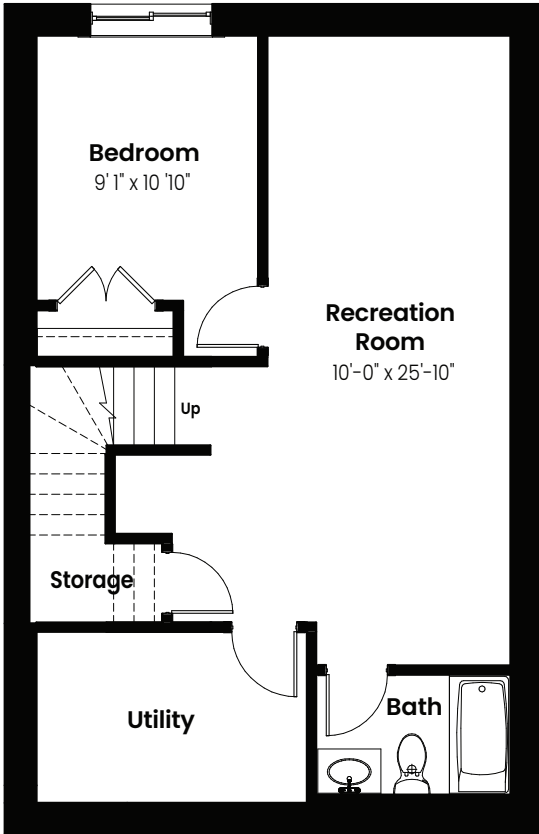


© 2025 Landmark Group of Companies Inc. All rights reserved. Any use or reproduction in whole or in part of these promotional materials without the prior written authorization of Landmark Group of Companies Inc. is strictly prohibited. Floor plans, specifications, pricing and dimensions shown are approximate and subject to change without notice. Artist rendering shown. Interior room dimensions are taken from inside of walls. Garage dimensions are taken from outside of walls. Revised on 01/17/2025.

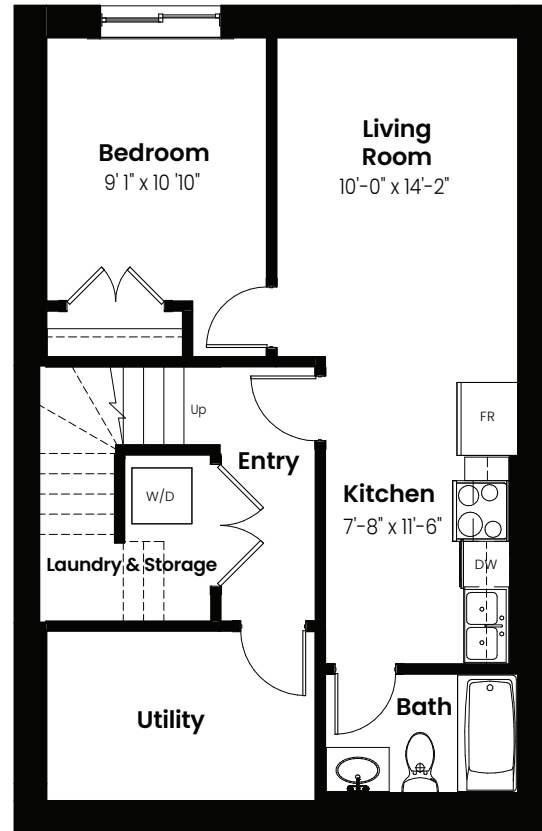
3 Beds | 2.5 Baths | 1,824 Sq. Ft. | 22' Wide

Lotus

Basement Options



Basement Development
Option: 538 Sq Ft



Basement Suite Option: 538 Sq Ft



3 Beds | 2.5 Baths | 1,824 Sq. Ft. | 22' Wide

Elevation

Lotus



© 2025 Landmark Group of Companies Inc. All rights reserved. Any use or reproduction in whole or in part of these promotional materials without the prior written authorization of Landmark Group of Companies Inc. is strictly prohibited. Floor plans, specifications, pricing and dimensions shown are approximate and subject to change without notice. Artist rendering shown. Interior room dimensions are taken from inside of walls. Garage dimensions are taken from outside of walls. Revised on 01/17/2025.