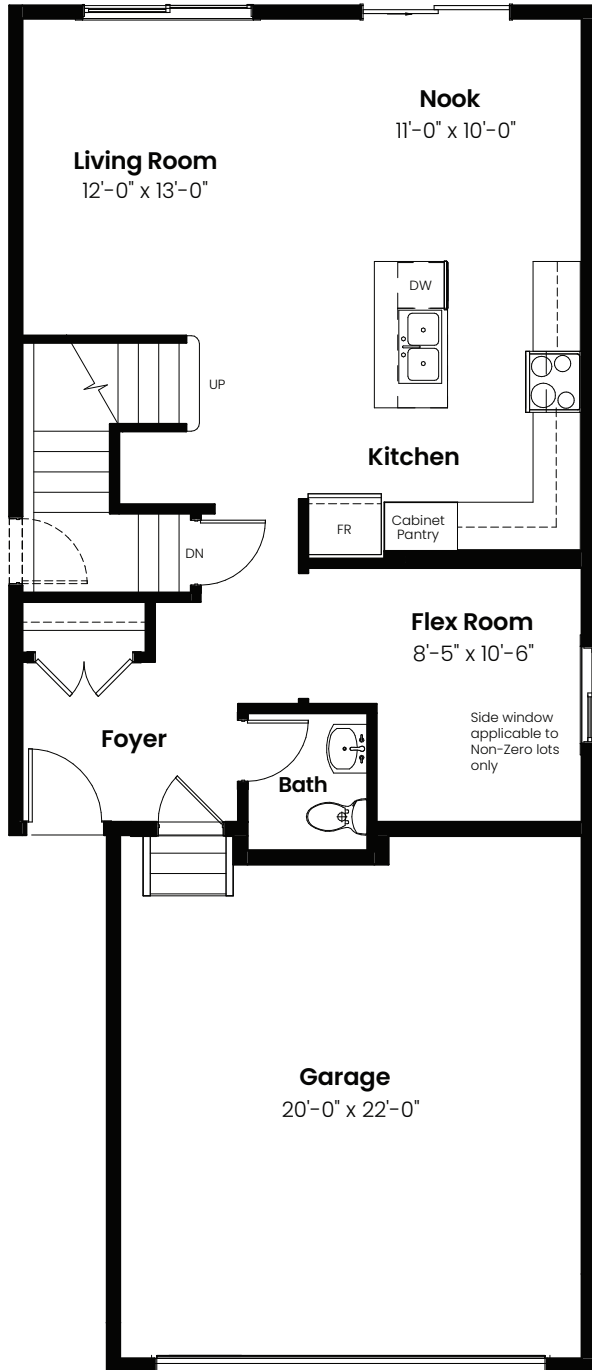


3 Bedrooms | 2.5 Bathrooms

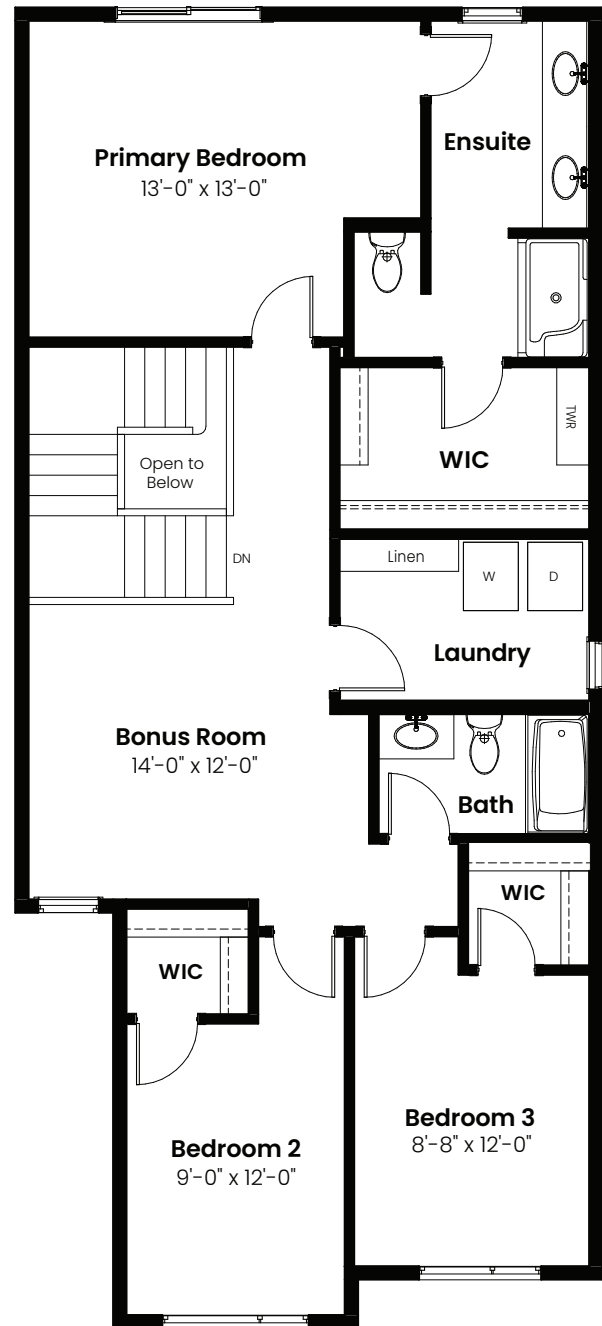
Petra

2,016 sqft

24' Wide



Main Floor: 823 Sq Ft



Second Floor: 1193 Sq Ft

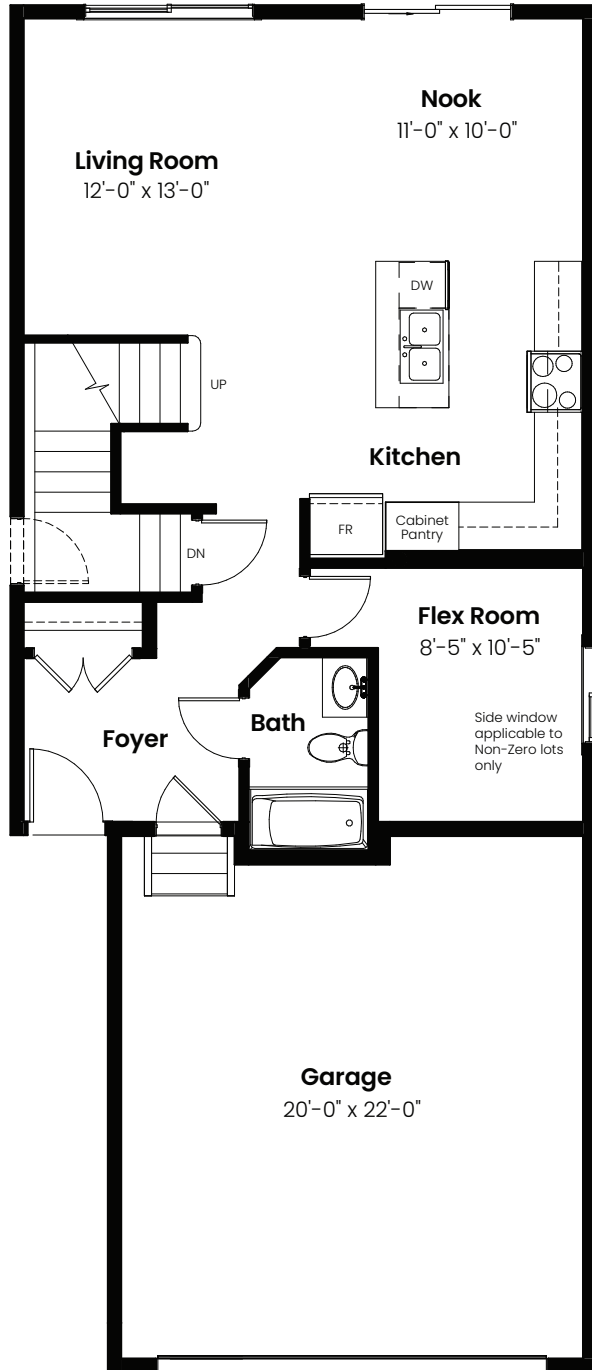


© 2025 Landmark Group of Companies Inc. All rights reserved. Any use or reproduction in whole or in part of these promotional materials without the prior written authorization of Landmark Group of Companies Inc. is strictly prohibited. Floor plans, specifications, pricing and dimensions shown are approximate and subject to change without notice. Artist rendering shown. Interior room dimensions are taken from inside of walls. Garage dimensions are taken from outside of walls. Revised on 01/17/2025.

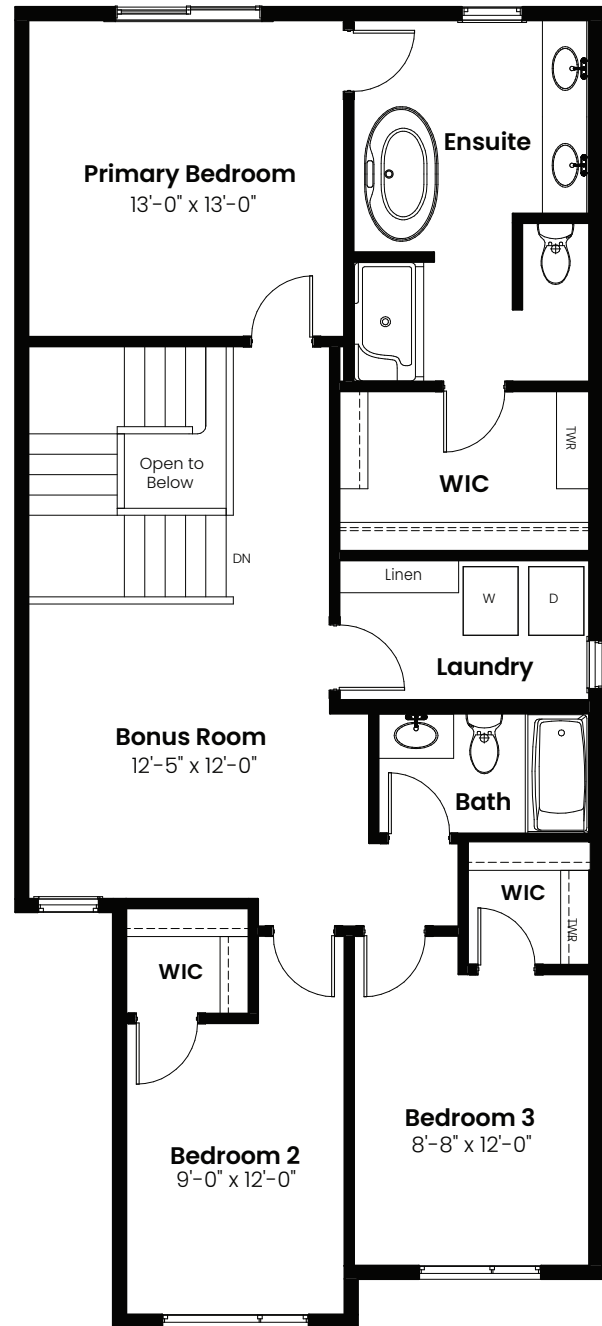
3 Beds | 2.5 Baths | 2,016 Sq. Ft. | 24' Wide

Options

Petra



Main Floor Bathroom Option: 823 Sq Ft



4 Piece Ensuite Option: 1193 Sq Ft

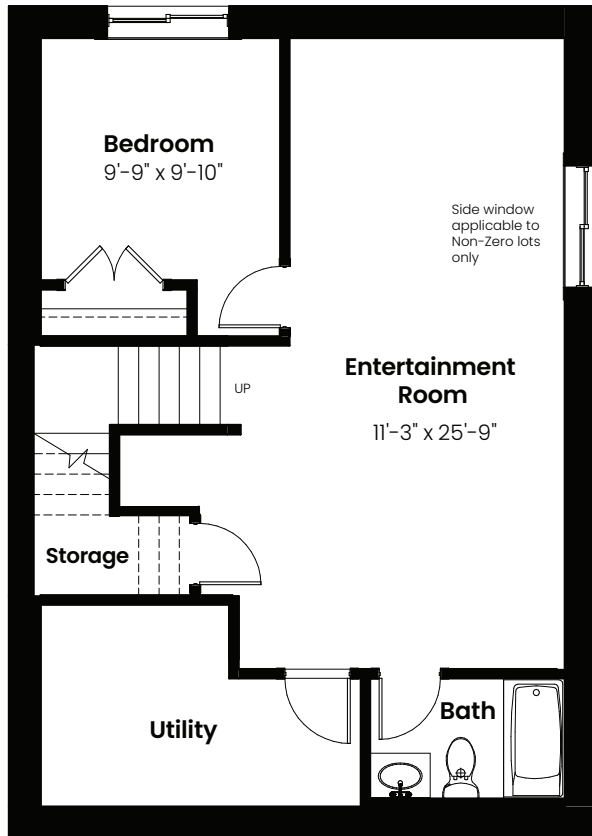
Side window applicable to Non-Zero lots only



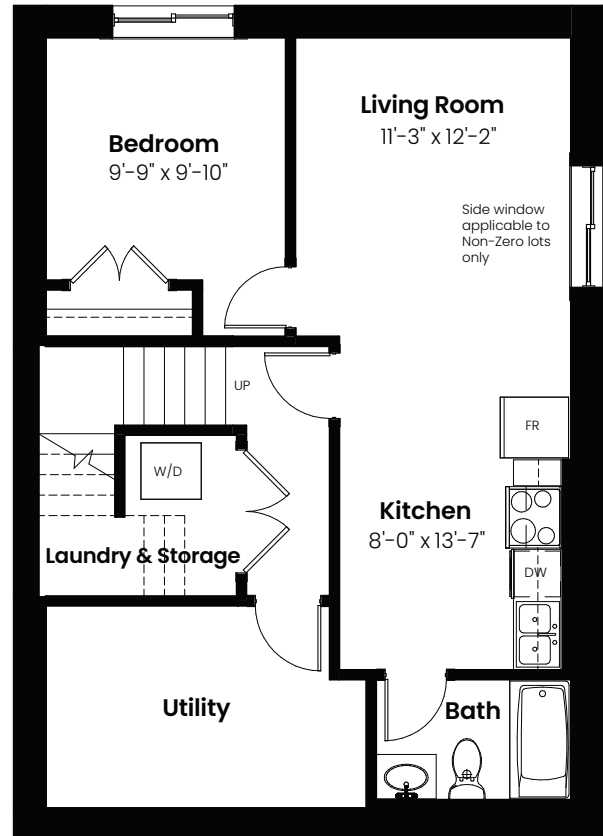
3 Beds | 2.5 Baths | 2,016 Sq. Ft. | 24' Wide

Petra

Basement Options



Basement Development
Option: 570 Sq Ft



Basement Suite Option: 570 Sq Ft



3 Beds | 2.5 Baths | 2,016 Sq. Ft. | 24' Wide

Petra

Elevation



© 2025 Landmark Group of Companies Inc. All rights reserved. Any use or reproduction in whole or in part of these promotional materials without the prior written authorization of Landmark Group of Companies Inc. is strictly prohibited. Floor plans, specifications, pricing and dimensions shown are approximate and subject to change without notice. Artist rendering shown. Interior room dimensions are taken from inside of walls. Garage dimensions are taken from outside of walls. Revised on 01/17/2025.