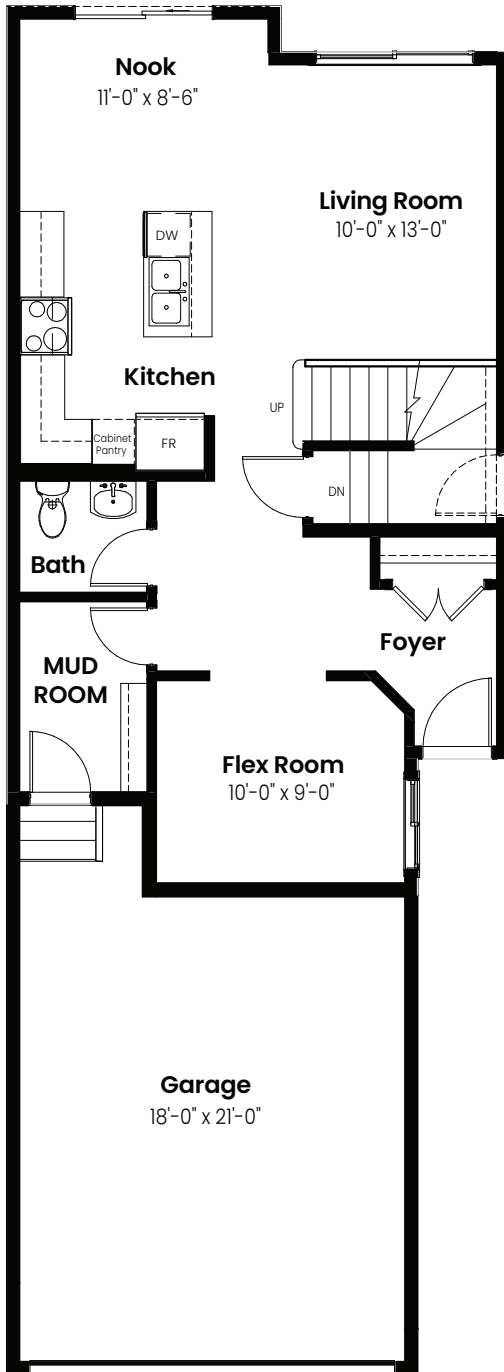


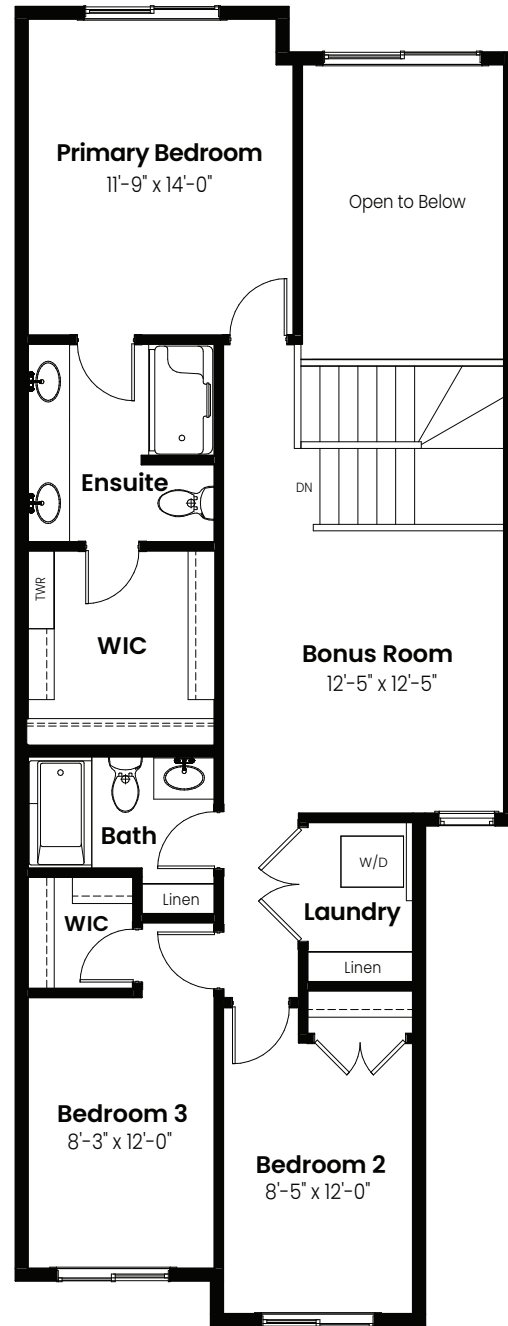
3 Bedrooms | 2.5 Bathrooms

Terra

1,824 sqft
22' Wide



Main Floor: 790 Sq Ft



Second Floor: 1034 Sq Ft

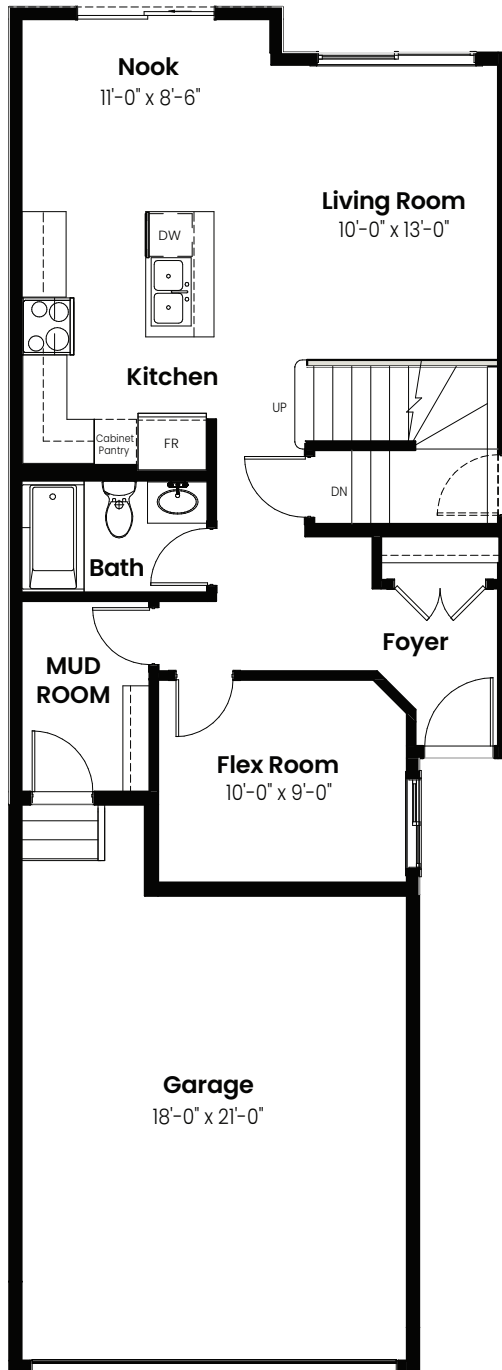


© 2025 Landmark Group of Companies Inc. All rights reserved. Any use or reproduction in whole or in part of these promotional materials without the prior written authorization of Landmark Group of Companies Inc. is strictly prohibited. Floor plans, specifications, pricing and dimensions shown are approximate and subject to change without notice. Artist rendering shown. Interior room dimensions are taken from inside of walls. Garage dimensions are taken from outside of walls. Revised on 01/17/2025.

3 Beds | 2.5 Baths | 1,824 Sq. Ft. | 22' Wide

Terra

Options



Main Floor Full Bathroom Option: 790 Sq Ft

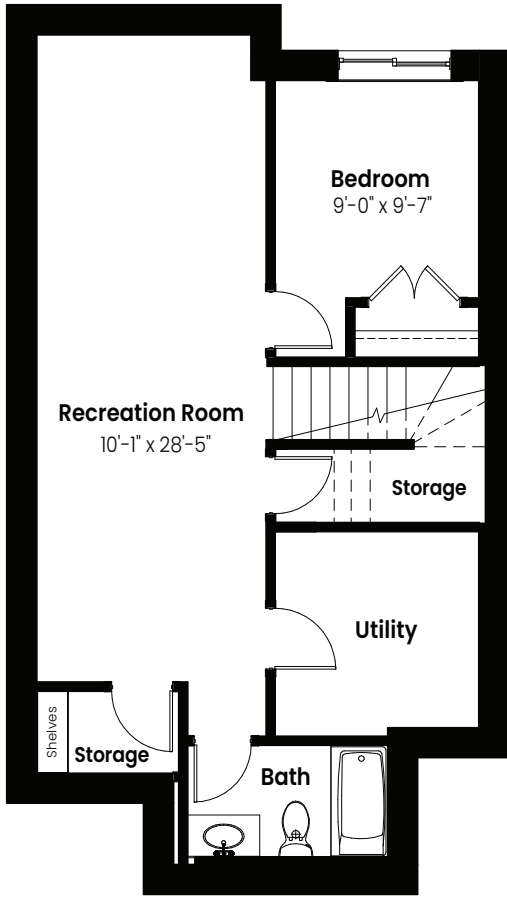


© 2025 Landmark Group of Companies Inc. All rights reserved. Any use or reproduction in whole or in part of these promotional materials without the prior written authorization of Landmark Group of Companies Inc. is strictly prohibited. Floor plans, specifications, pricing and dimensions shown are approximate and subject to change without notice. Artist rendering shown. Interior room dimensions are taken from inside of walls. Garage dimensions are taken from outside of walls. Revised on 01/17/2025.

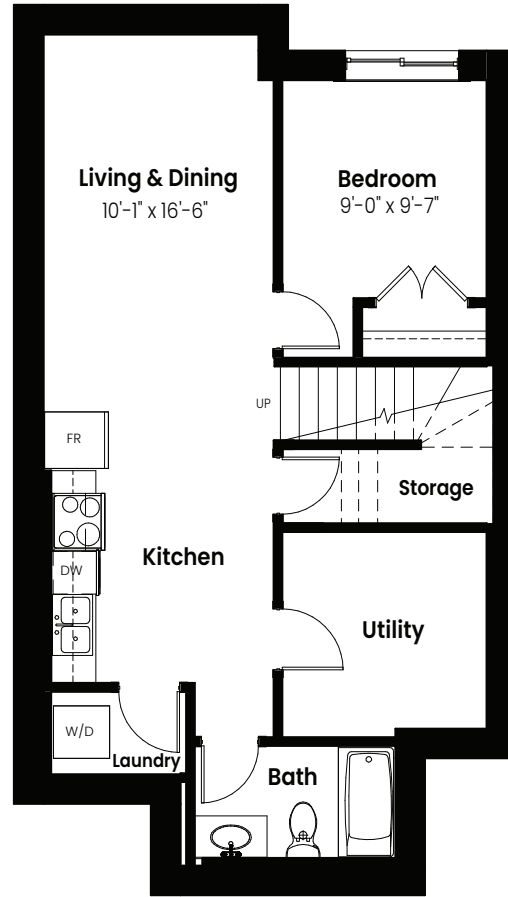
3 Beds | 2.5 Baths | 1,824 Sq. Ft. | 22' Wide

Terra

Basement Options



Basement Development
Option: 555 Sq Ft



Basement Suite Option: 555 Sq Ft



3 Beds | 2.5 Baths | 1,824 Sq. Ft. | 22' Wide

Terra

Elevation



© 2025 Landmark Group of Companies Inc. All rights reserved. Any use or reproduction in whole or in part of these promotional materials without the prior written authorization of Landmark Group of Companies Inc. is strictly prohibited. Floor plans, specifications, pricing and dimensions shown are approximate and subject to change without notice. Artist rendering shown. Interior room dimensions are taken from inside of walls. Garage dimensions are taken from outside of walls. Revised on 01/17/2025.