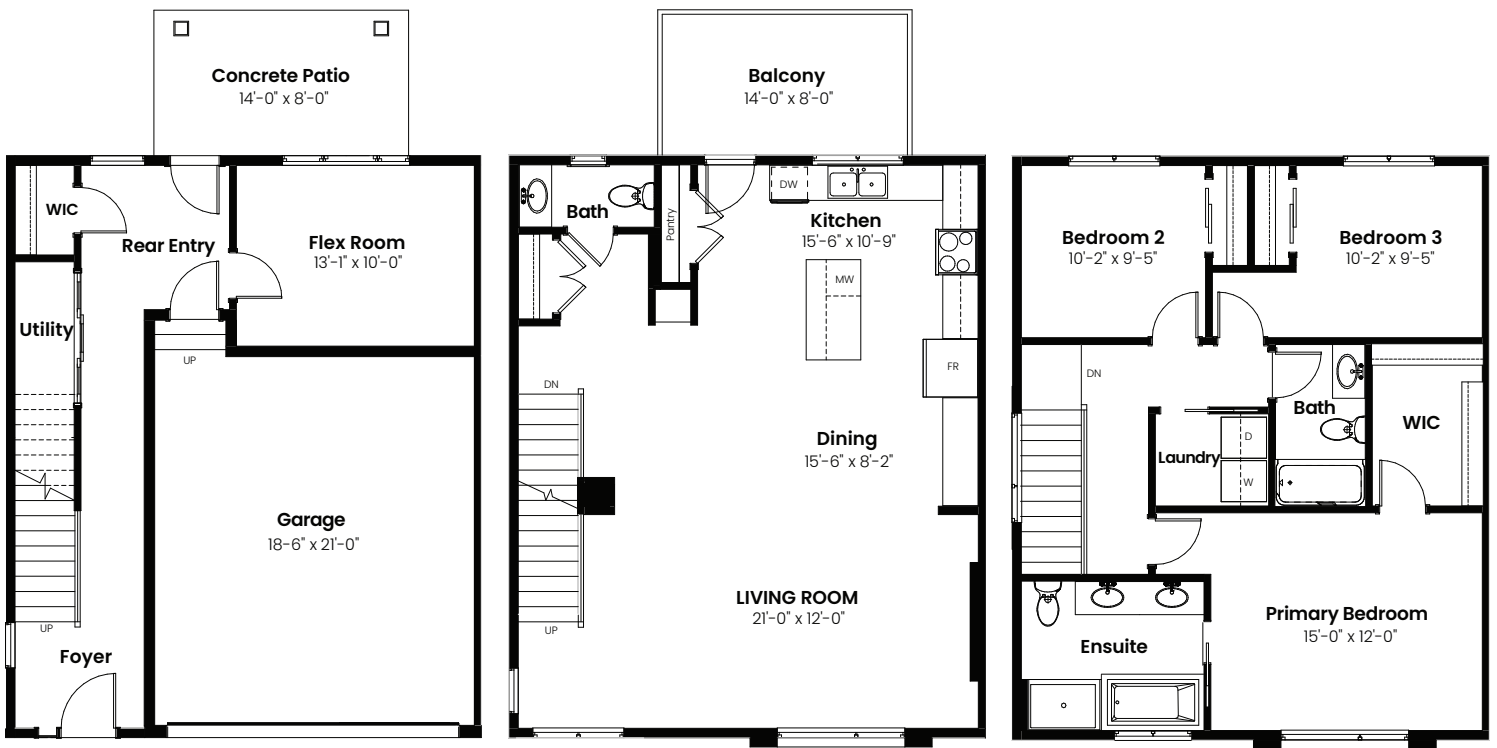


3 Beds | 2.5 Baths | 2,062 Sq. Ft | 26' Wide

# Trevi

# End Unit



Ground Floor: 388 Sq Ft

Main Floor: 837 Sq Ft

Second Floor: 837 Sq Ft

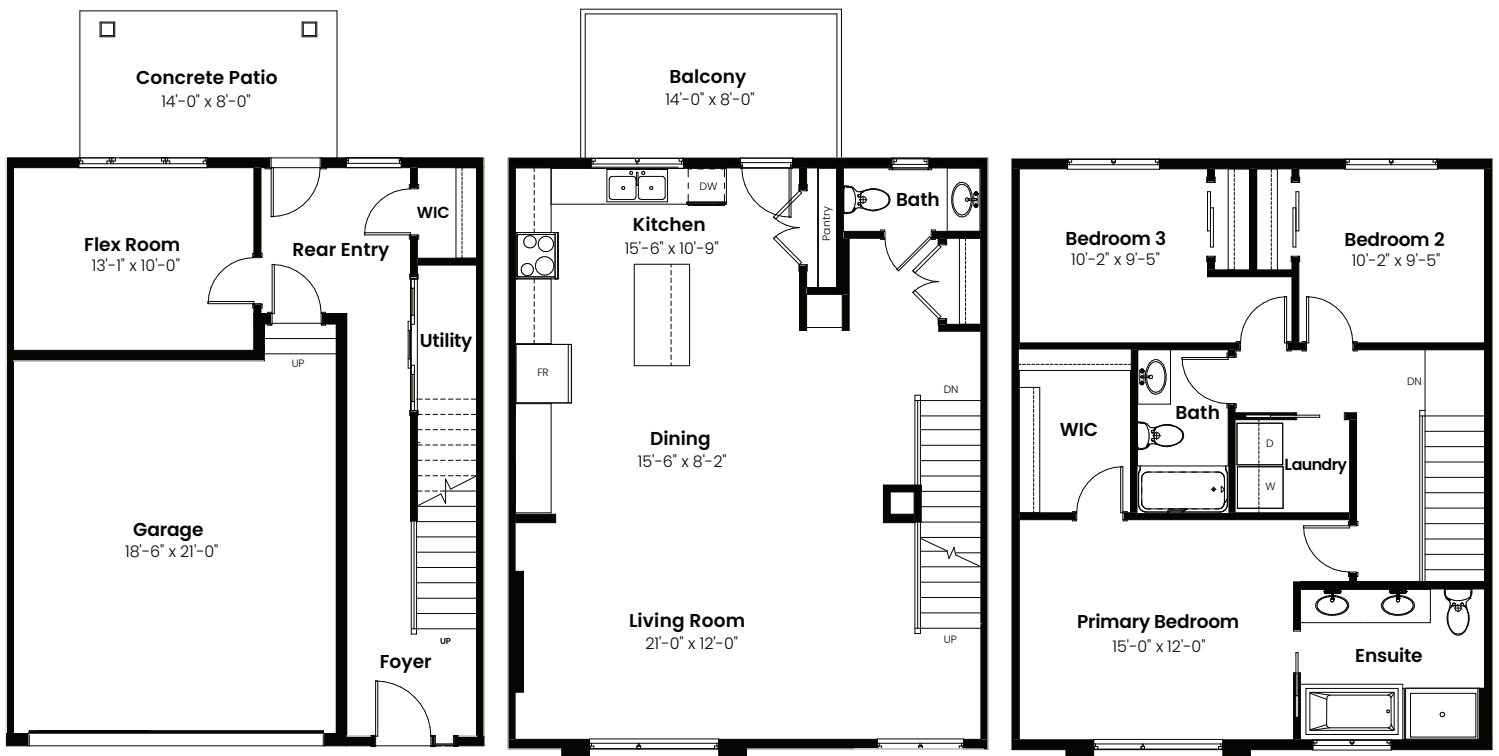


© 2024 Landmark Group of Companies Inc. All rights reserved. Any use or reproduction in whole or in part of these promotional materials without the prior written authorization of Landmark Group of Companies Inc. is strictly prohibited. Floor plans, specifications, pricing and dimensions shown are approximate and subject to change without notice. Artist rendering shown. Interior room dimensions are taken from inside of walls. Garage dimensions are taken from outside of walls. Revised on 08/21/2024.

3 Beds | 2.5 Baths | 2,047 Sq. Ft | 26' Wide

# Trevi

# Middle Unit



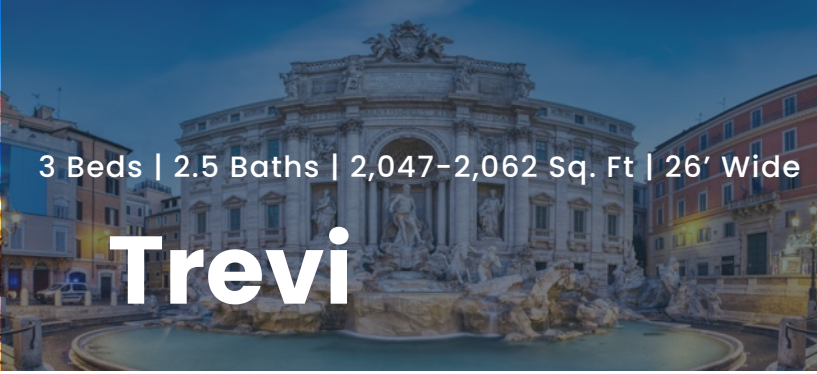
Ground Floor: 383 Sq Ft

Main Floor: 832 Sq Ft

Second Floor: 832 Sq Ft



© 2024 Landmark Group of Companies Inc. All rights reserved. Any use or reproduction in whole or in part of these promotional materials without the prior written authorization of Landmark Group of Companies Inc. is strictly prohibited. Floor plans, specifications, pricing and dimensions shown are approximate and subject to change without notice. Artist rendering shown. Interior room dimensions are taken from inside of walls. Garage dimensions are taken from outside of walls. Revised on 08/21/2024.



3 Beds | 2.5 Baths | 2,047-2,062 Sq. Ft | 26' Wide

# Trevi

# Elevation



© 2024 Landmark Group of Companies Inc. All rights reserved. Any use or reproduction in whole or in part of these promotional materials without the prior written authorization of Landmark Group of Companies Inc. is strictly prohibited. Floor plans, specifications, pricing and dimensions shown are approximate and subject to change without notice. Artist rendering shown. Interior room dimensions are taken from inside of walls. Garage dimensions are taken from outside of walls. Revised on 08/21/2024.